



MONTHLY MEMBERSHIP PROGRESS REPORT

District 321C2

Results as of: 05/31/2019

GMT: ANIL TULSYAN

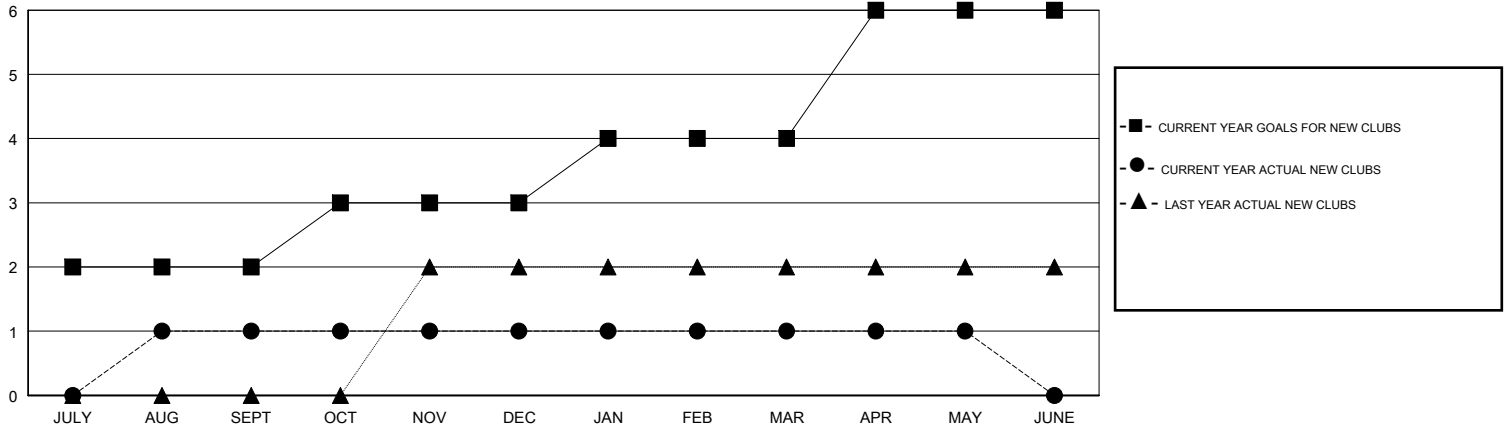
LOCATION INDIA

GMT CA

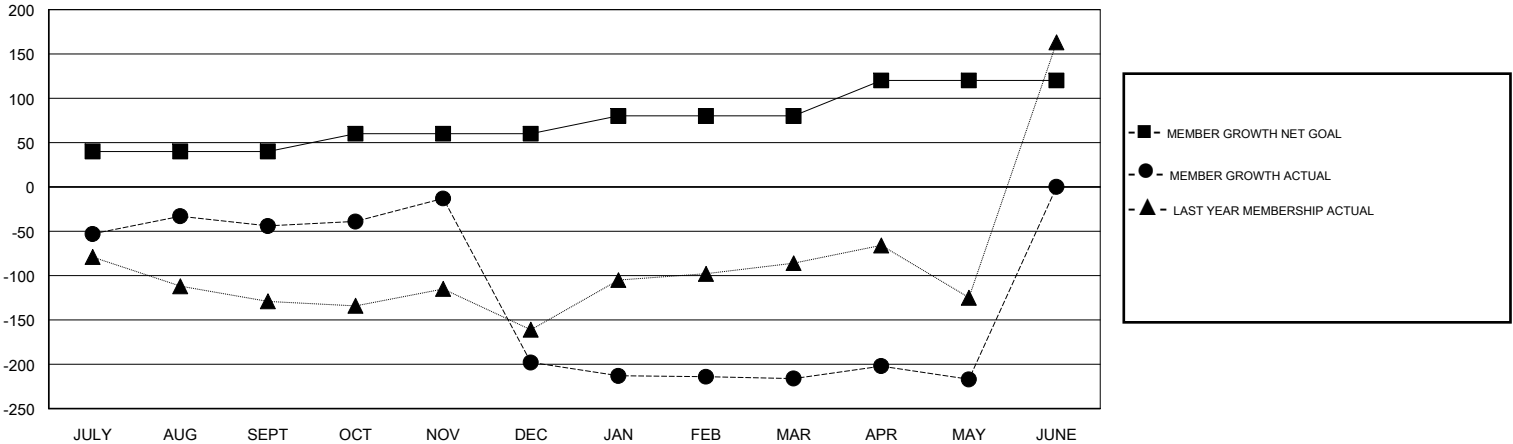
Clubs			
RESULTS FOR 2018-2019			
QUARTER	NEW CLUB GOAL	NEW CLUBS	DROPPED CLUBS
JULY/AUG/SEPT	2	1	0
OCT/NOV/DEC	1	0	5
JAN/FEB/MAR	1	0	1
APR/MAY/JUNE	2	0	0

Members			
RESULTS FOR 2018-2019			
QUARTER	MEMBER GROWTH NET GOAL	MEMBER GROWTH ACTUAL	DROPPED MEMBERS ACTUAL (including transfers)
JULY/AUG/SEPT	40	98	103
OCT/NOV/DEC	20	107	242
JAN/FEB/MAR	20	68	62
APR/MAY/JUNE	40	165	39

GOALS AND ACTUAL NEW CLUBS CUMULATIVE



GOALS AND ACTUAL MEMBERS CUMULATIVE



DROPPED CLUBS: 6	36 CLUBS OF 82 ADDED 1 OR MORE NEW MEMBERS	<u>GENDER DISTRIBUTION</u>	
DROPPED MEMBERS		MALE	2,272 (63.84%)
DECEASED	9	FEMALE	1,287 (36.16%)
CLUB CANCELLED	129	Women Percentage Fiscal Year Goal: 35%	
OTHER	308	TOTAL FAMILY UNIT MEMBERS	2,280
TOTAL	446	FAMILY MEMBERS PAYING HALF DUES	1,408

[CLICK HERE FOR CUMULATIVE MEMBERSHIP DATA](#)